

TAVOLE ROTANTI SERIE 6

ROTARY INDEX TABLES SERIES 6



autorotor

**I NOSTRI AGENTI IN ITALIA
OUR AGENTS IN ITALY**

Province di Bergamo, Brescia, Pavia, Cremona e Mantova	AUTOMAZIONE INDUSTRIALE S. A. S. di A. Colpani & C. Via M. D'Azeglio, 13 - 24047 Treviglio (BG) Tel. e Fax 0363 45 026 e-mail: a.colpani@tin.it
Province di Como, Lecco, Novara, Sondrio, Varese, Verbania.	BIANCHINI D. & C. S.A.S. Via Novellina, 14/C - 21050 Besano (VA) Tel. 0332 916 627 - Fax 0332 916 419 e-mail: info@agbianchini.com http://www.bianchinisas.com
Toscana e Umbria.	U.T.R. S.R.L. – UFFICIO TECNICO RAPPRESENTANZE Via Yuri Gagarin, 32/34 - 59100 Prato Tel. 0574 636677 / 634005 Fax 0574 634005 / 632757 e-mail: utr@utr.191.it http://www.utrsrl.com
Campania	DELVA S.R.L. SS 265 Km 25.850 - 81020 San Marco Evangelista (CE) Tel. 0823/202041 - Fax. 0823/202054 e-mail: v.deangeli@delva.it web: http://www.delva.it
Puglia e Basilicata	GIUSEPPE GENGA – RAPPRESENTANZE INDUSTRIALI Via V. Bottego, 31 – 70019 Triggiano (BA) Tel. 348 3809743 – Fax 080 4685878 e-mail: geng0001@ggenga.191.it
Province di Lodi e Milano	RICOTTI FRANCO ANDREA Via del Futurismo,31 – 20128 Milano (MI) Tel. e Fax 02/512261 e-mail: francoandrea.ricotti@gmail.com
Emilia Romagna, Marche e Abruzzo	ANTONIO MORUCCHIO Via Bertocchi, 55 - 40133 Bologna Tel. 051 619 5543 - Fax 051 619 5543 e-mail: antmoruc@tin.it
Province di Aosta, Alessandria, Asti, Biella, Cuneo, Torino, Vercelli, Genova, Imperia, La Spezia, Savona.	SFERA RAPPRESENTANZE S.A.S. DI GHIRELLO FRANCESCO Via Devesi, 28 - 10076 Nole (TO) Tel. 011 929 6779 - Fax 011 929 5188 e-mail: info@sferarappresentanze.com
Triveneto	SIN.TEC. DI P.I. ERMANNO SANTON Via O. Galante, 79/2 - 35129 Padova Tel. 049 775 147 - Fax 049 780 62 69 e-mail: info@sinergietecniche.it http://www.sinergietecniche.it

TAVOLE ROTANTI SERIE 6

ROTARY INDEX TABLES SERIES 6

INDICE

□ Piani lavorati della tavola	4
□ Posizione di lavoro tavola rotante	4
□ Posizione di montaggio unità motrice	5
□ Angoli impegnati per lo spostamento	5
□ Tavola rotante T 16	6
□ Tavola rotante T 26	10
□ Note	14

CONTENTS

□ <i>Table machined sides</i>	<i>4</i>
□ <i>Index table operating position</i>	<i>4</i>
□ <i>Power drive unit assembling position</i>	<i>5</i>
□ <i>Cam rotation angle performing the transfer movements</i>	<i>5</i>
□ <i>Rotary index table T 16</i>	<i>6</i>
□ <i>Rotary index table T 26</i>	<i>10</i>
□ <i>Notes</i>	<i>14</i>

PROPRIETA' LETTERARIA RISERVATA

ALL RIGHTS RESERVED

E' vietata la riproduzione anche parziale del testo e delle illustrazioni contenute nella presente pubblicazione

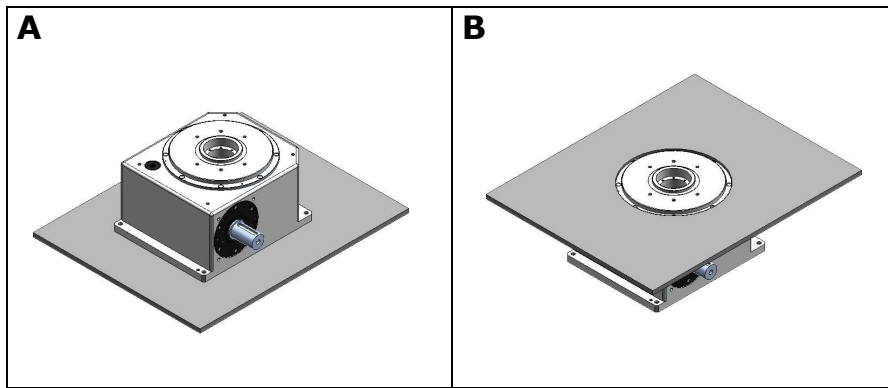
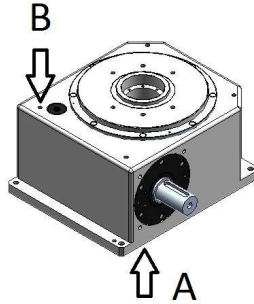
No part of this publication may be reproduced, stored in a retrieval system, or transmitted in any form without the prior permission of AUTOROTOR

PIANI LAVORATI DELLA TAVOLA

TABLE MACHINED SIDES

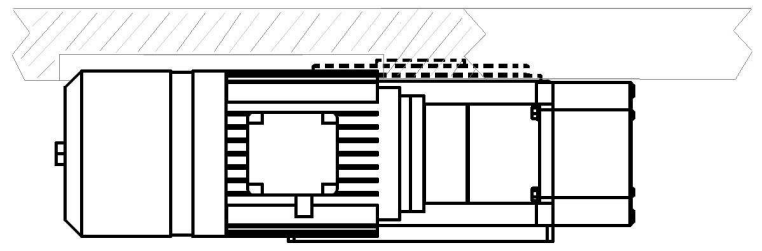
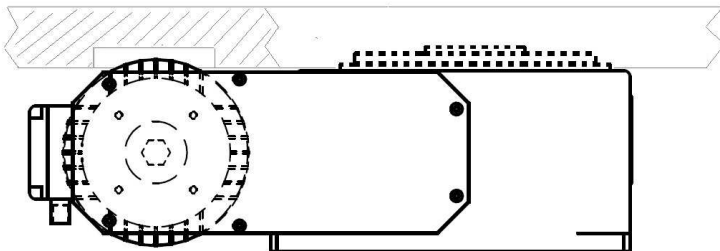
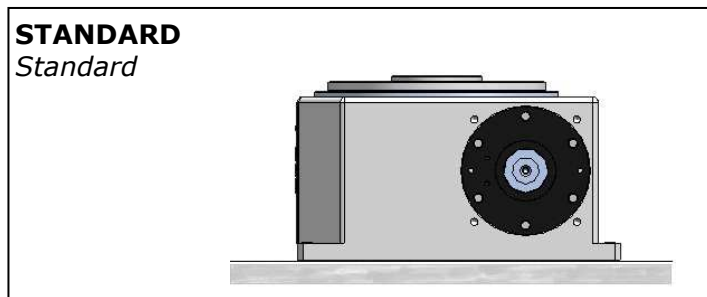
Normalmente la tavola viene lavorata sui piani A e B. Per le posizioni di montaggio vedi il prossimo paragrafo.
 Le figure sottostanti illustrano qualche esempio.

*Rotary indexing table is normally machined on planes A and B. For mounting position see next paragraph.
 Some examples are shown below.*



POSIZIONE DI LAVORO TAVOLA ROTANTE

INDEX TABLE OPERATING POSITION

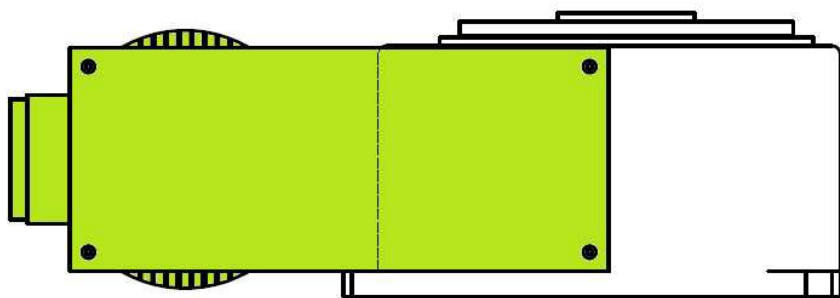


N.B.: Nel caso di applicazioni a soffitto contattare il nostro Ufficio tecnico ingombri del motore

N.B.: If the table is fixed to the bottom of the bench plate please contact our Technical Department

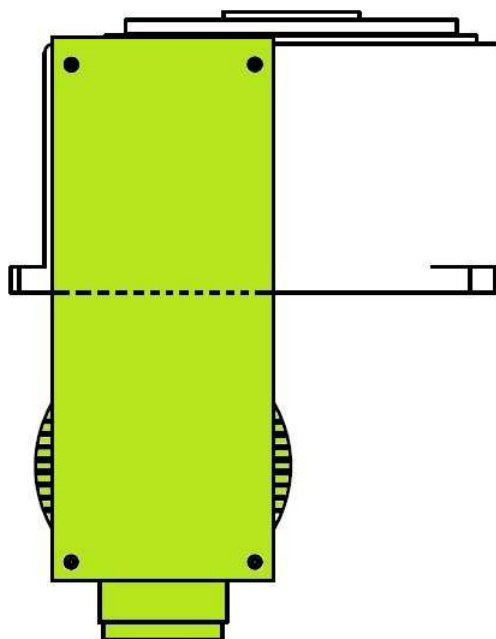
POSIZIONE DI MONTAGGIO UNITA' MOTTRICE

POWER DRIVE UNIT ASSEMBLING POSITION



POS. A

POS. B



ANGOLI IMPEGNATI PER LO SPOSTAMENTO

CAM ROTATION ANGLE PERFORMING THE TRANSFER MOVEMENTS

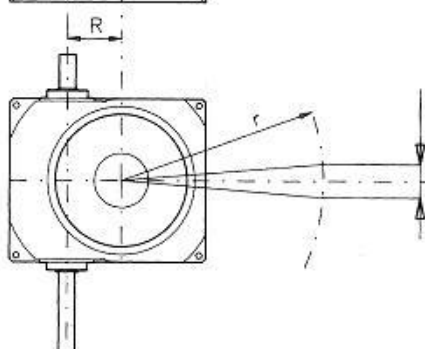
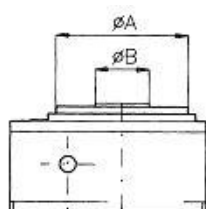
Angoli camma Cam rotation angle	Profilo camma Cam profiles	Divisioni Stations						
		2	3	4	6	8	12	16
270	1							
300								



ANGOLI DI CAMMA REALIZZABILI
Feasible cam transfer angles

TOLLERANZA TAVOLE ROTANTI

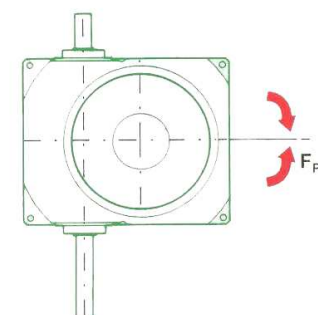
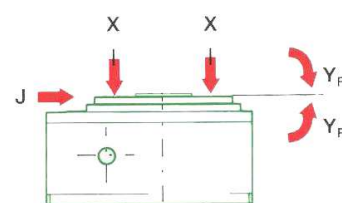
TOLERANCES OF ROTARY INDEX TABLES



$$Er = \frac{r}{R} \cdot EE$$

- **Ripetibilità / Repeatability:**
 - **R** : 50.0 mm
 - **EE**: $\pm 0,025$ mm
- **Planarità disco / Disc flatness:**
 - **A**: 130 mm
 - **Total**: 0,010 mm
- **Eccentricità disco / Disc eccentricity:**
 - **B**: 65 mm
 - **Total**: 0,010 mm

Errore di ripetibilità / Repeatability tolerance



Carichi massimi sul disco rotante				
Max load on indexing disk				
combinati / combined		momenti / torque		
assiale axial X	radiale radial J	flettente bending Yf	ribaltante overturning Yr	in pausa in dwell Mp
daN		daNm		
1100	1100	32	20	28

ATTRITO DI PRIMO DISTACCO **Ma** : **0,9 [daNm]**
 START FRICTION TORQUE

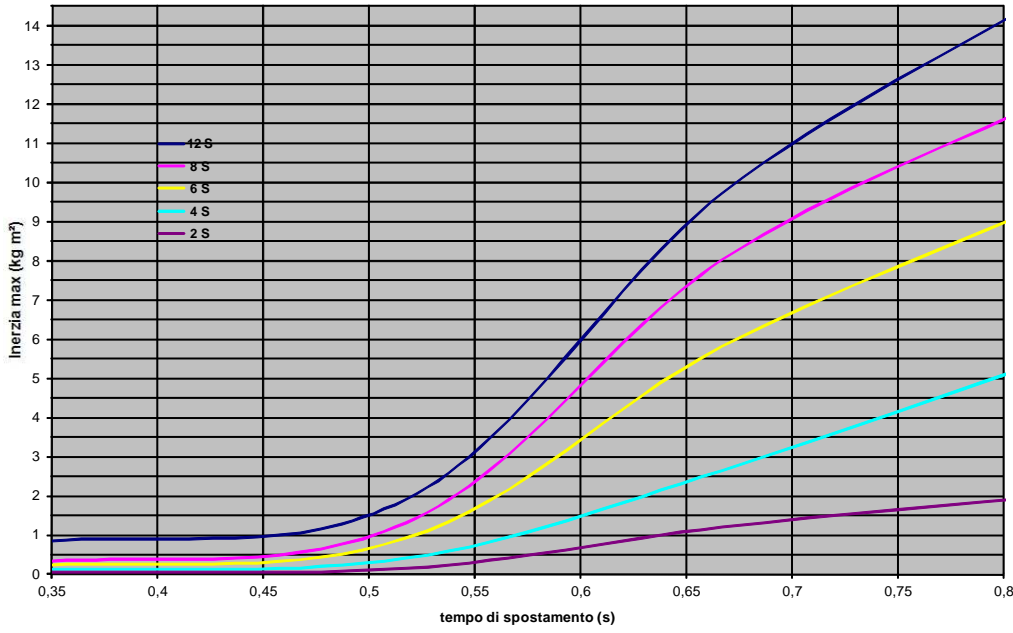
RAGGIO MAX DISCO APPLICABILE : **800 mm**
 MAX. RADIUS OF THE APPLICABLE DISK

T16

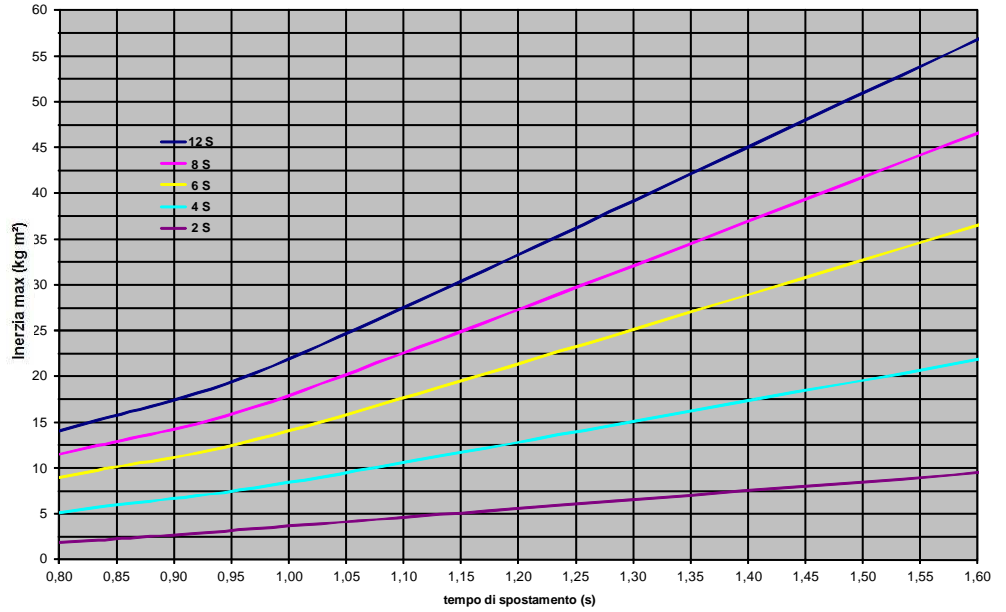
Divisioni		A	B	C	D	E	F	G	H
2	Ts (s)	0,37	0,57	0,74	0,93	1,11	1,85	2,78	4,31
	Jt (kgm ²)	0,06	0,07	0,95	2,06	3,61	10,04	22,59	54,39
4	Ts	0,33	0,52	0,67	0,83	1,00	1,67	2,50	3,88
	Jt	0,16	0,19	2,64	5,70	8,38	23,27	52,35	126,06
6	Ts	0,33	0,52	0,67	0,83	1,00	1,67	2,50	3,88
	Jt	0,35	0,42	5,93	9,73	14,01	38,92	87,56	210,84
8	Ts	0,33	0,52	0,67	0,83	1,00	1,67	2,50	3,88
	Jt	0,64	0,77	7,96	12,44	17,91	49,75	111,94	269,53
12	Ts	0,33	0,52	0,67	0,83	1,00	1,67	2,50	3,88
	Jt	1,40	1,68	9,70	15,16	21,83	60,64	136,45	328,55

PRESTAZIONI DELLA TAVOLA

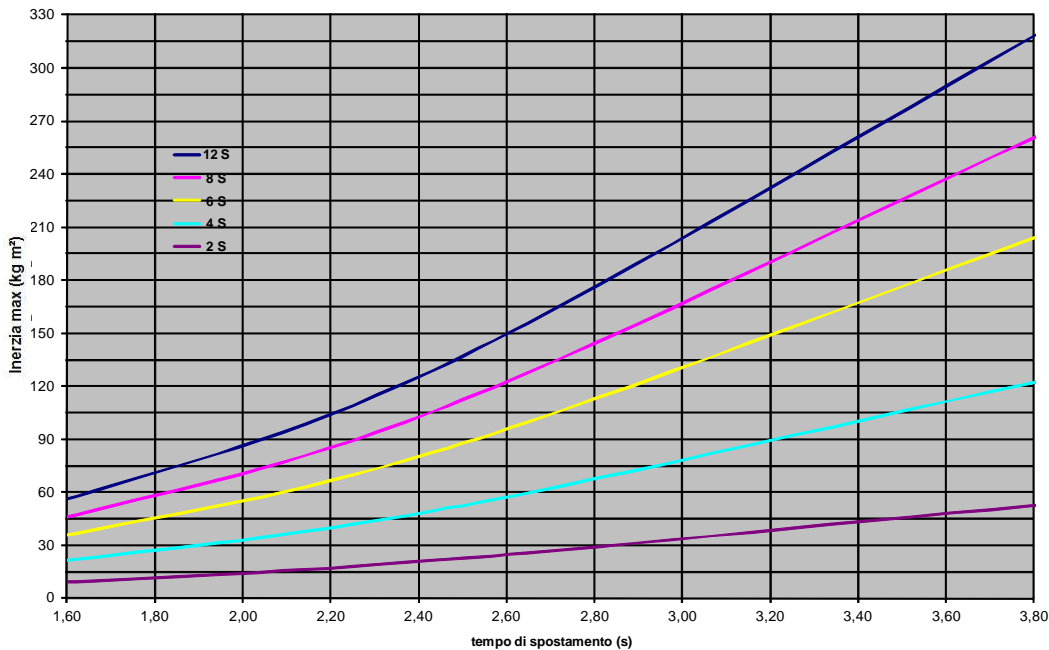
ROTARY TABLE PERFORMANCE



Configurazione intermedia
"Intermediate" layout

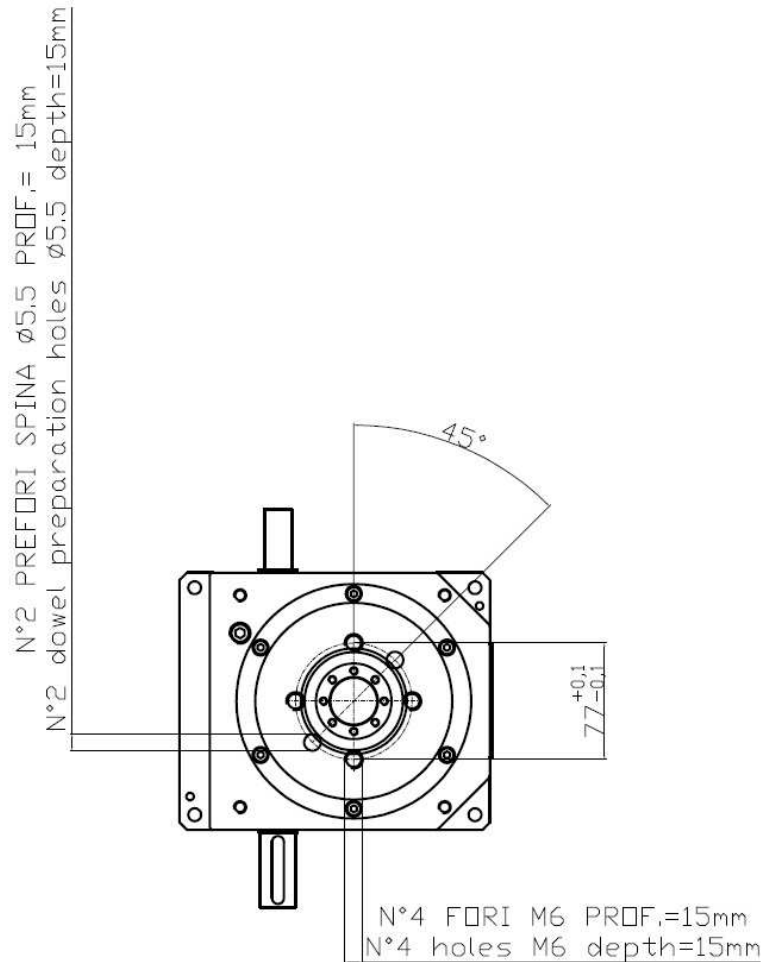


Configurazione lenta
"Slow" layout



FORI PER L'ASSEMBLAGGIO SUL DISCO TAVOLA

ASSEMBLING THREADED HOLES ON TABLE DISK



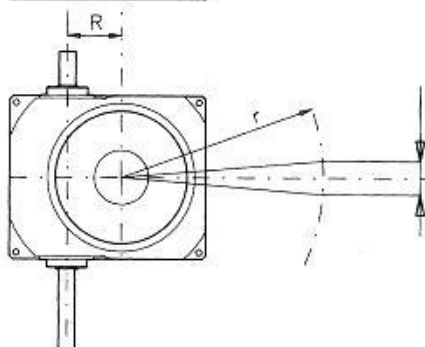
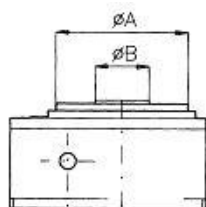
INGOMBRI DELLE DIVERSE CONFIGURAZIONI

ENCUMBRANCE IN THE DIFFERENT CONFIGURATIONS

Solo tavola <i>Table only</i>	Tavola e trasmissioni <i>Table with transmissions</i>
<p>$\phi 18$ h7</p> <p>127</p> <p>136</p> <p>$\phi 22$ h7</p>	<p>272.5</p> <p>267.5</p> <p>90</p>
Peso / Weight : 13 Kg	Peso / Weight : 16 Kg

TOLLERANZA TAVOLE ROTANTI

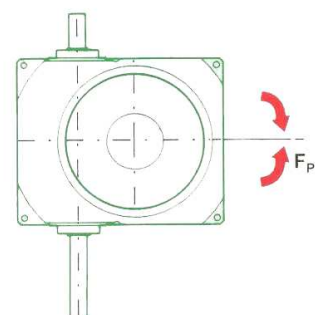
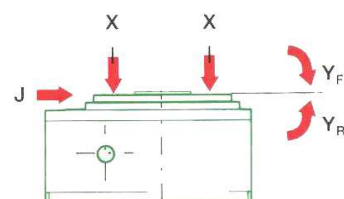
TOLERANCES OF ROTARY INDEX TABLES



$$E_r = \frac{r}{R} \cdot EE$$

- **Ripetibilità / Repeatability:**
 - R : 80.0 mm
 - **Standard: ±0,025 mm**
- **Planarità disco / Disc flatness:**
 - A: 195 mm
 - **Total: 0,010 mm**
- **Eccentricità disco / Disc eccentricity:**
 - B: 80 mm
 - **Total: 0,010 mm**

Errore di ripetibilità / Repeatability tolerance



Carichi massimi sul disco rotante				
Max load on indexing disk				
combinati / combined		momenti / torque		
assiale axial X	radiale radial J	flettente bending Yf	ribaltante overturning Yr	in pausa in dwell Mp
daN		daNm		
1800	1650	68	38	69

ATTRITO DI PRIMO DISTACCO Ma : 1.4 [daNm]
START FRICTION TORQUE

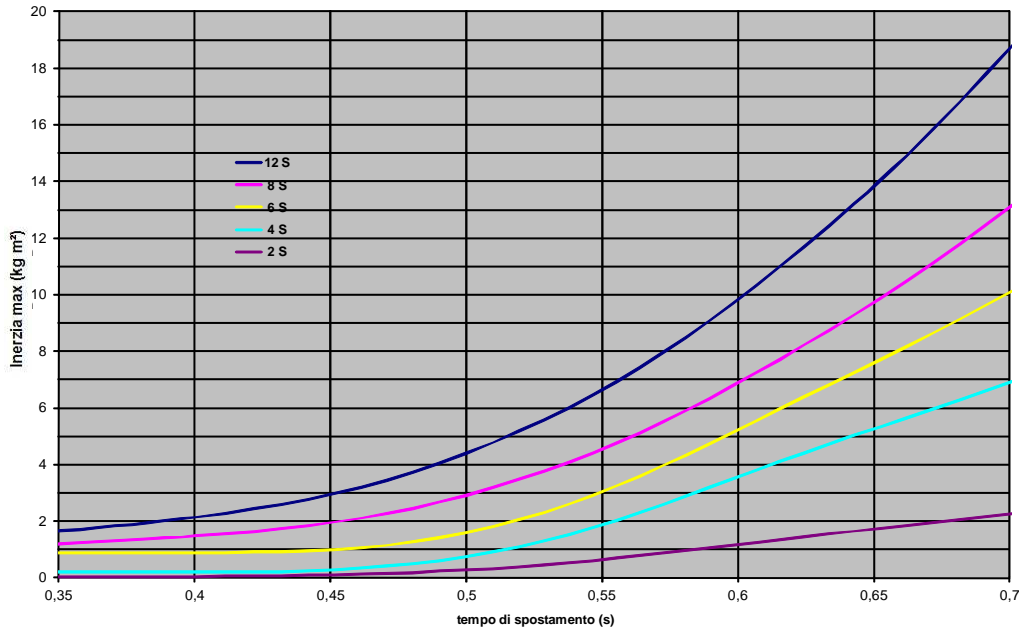
RAGGIO MAX DISCO APPLICABILE : 1200 mm
MAX. RADIUS OF THE APPLICABLE DISK

T26

Divisioni		A	B	C	D	E	F	G	H
2	Ts (s)	0,00	0,56	0,71	0,89	1,07	1,79	2,68	4,17
	Jt (kgm ²)	0,00	0,26	1,63	3,36	5,43	20,02	50,57	122,37
4	Ts	0,32	0,50	0,64	0,80	0,96	1,61	2,41	3,75
	Jt	0,66	0,71	5,03	10,38	16,34	59,97	145,64	352,41
6	Ts	0,32	0,50	0,64	0,80	0,96	1,61	2,41	3,75
	Jt	0,93	1,59	7,24	15,55	24,64	92,98	227,28	549,97
8	Ts	0,32	0,50	0,64	0,80	0,96	1,61	2,41	3,75
	Jt	1,01	2,91	9,28	20,75	33,52	129,41	317,95	769,36
12	Ts	0,32	0,50	0,64	0,80	0,96	1,61	2,41	3,75
	Jt	1,38	4,39	13,20	29,86	48,10	187,05	459,76	1112,49

PRESTAZIONI DELLA TAVOLA

ROTARY TABLE PERFORMANCE

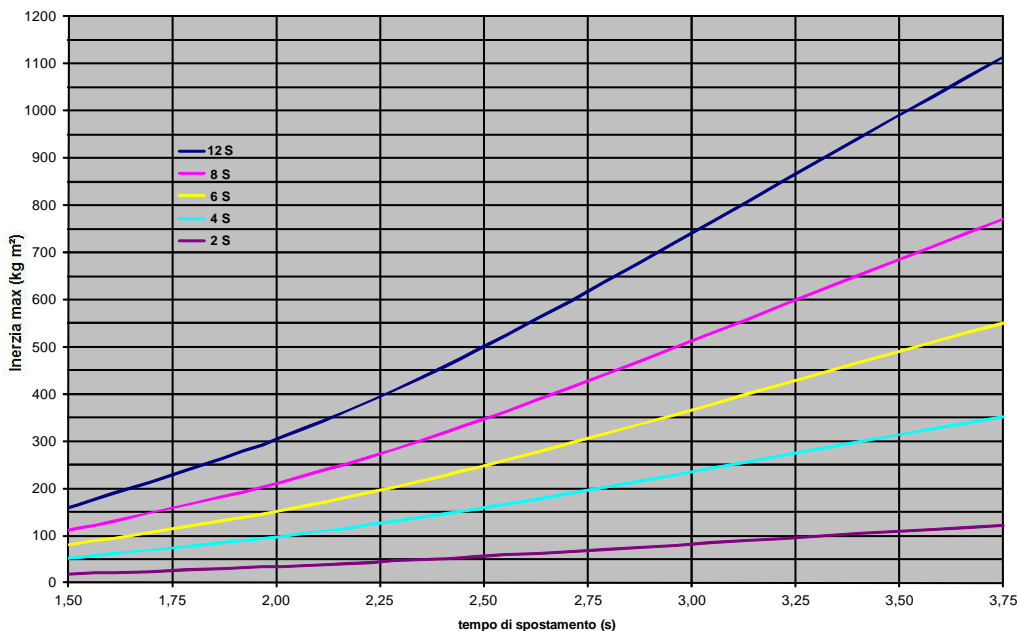
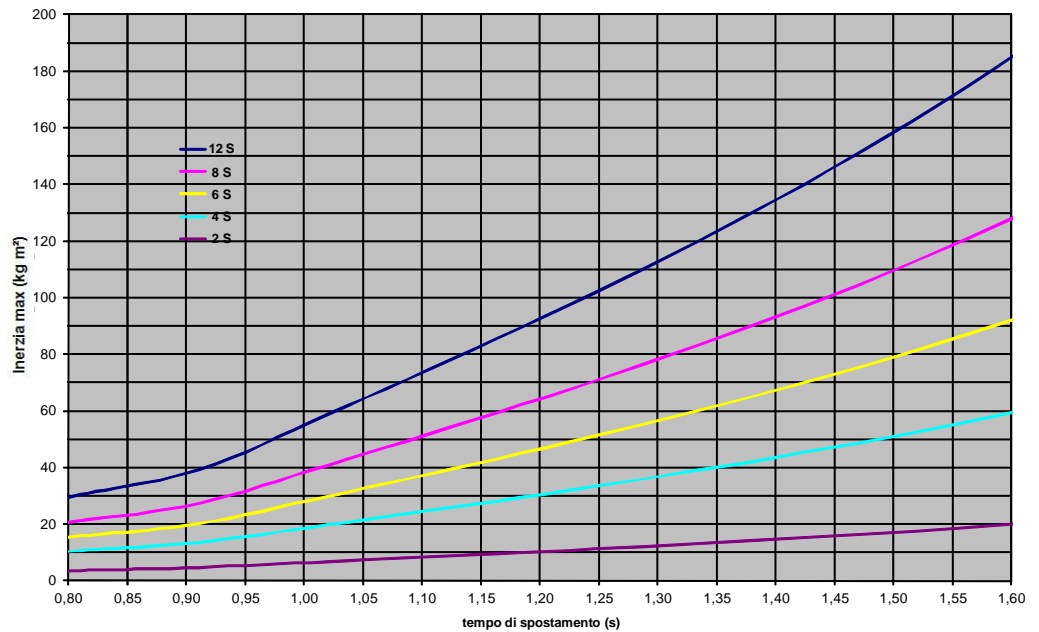


Configurazione veloce

"Fast" layout

Configurazione intermedia

"Intermediate" layout

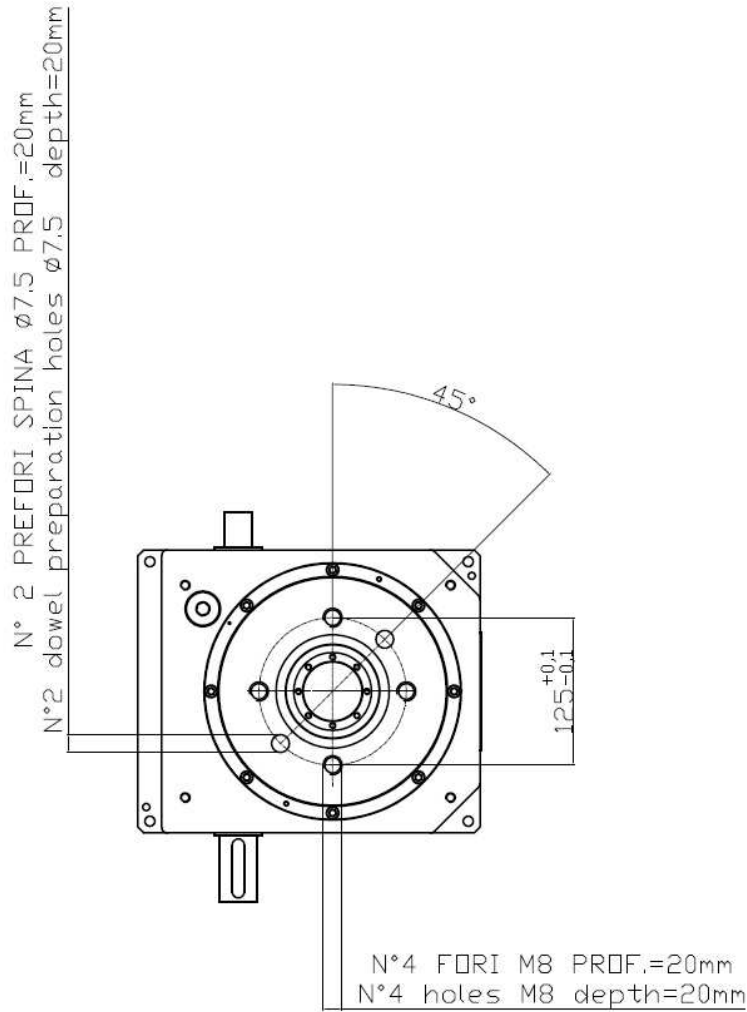


Configurazione lenta

"Slow" layout

FORI PER L'ASSEMBLAGGIO SUL DISCO TAVOLA

ASSEMBLING THREADED HOLES ON TABLE DISK



INGOMBRI DELLE DIVERSE CONFIGURAZIONI

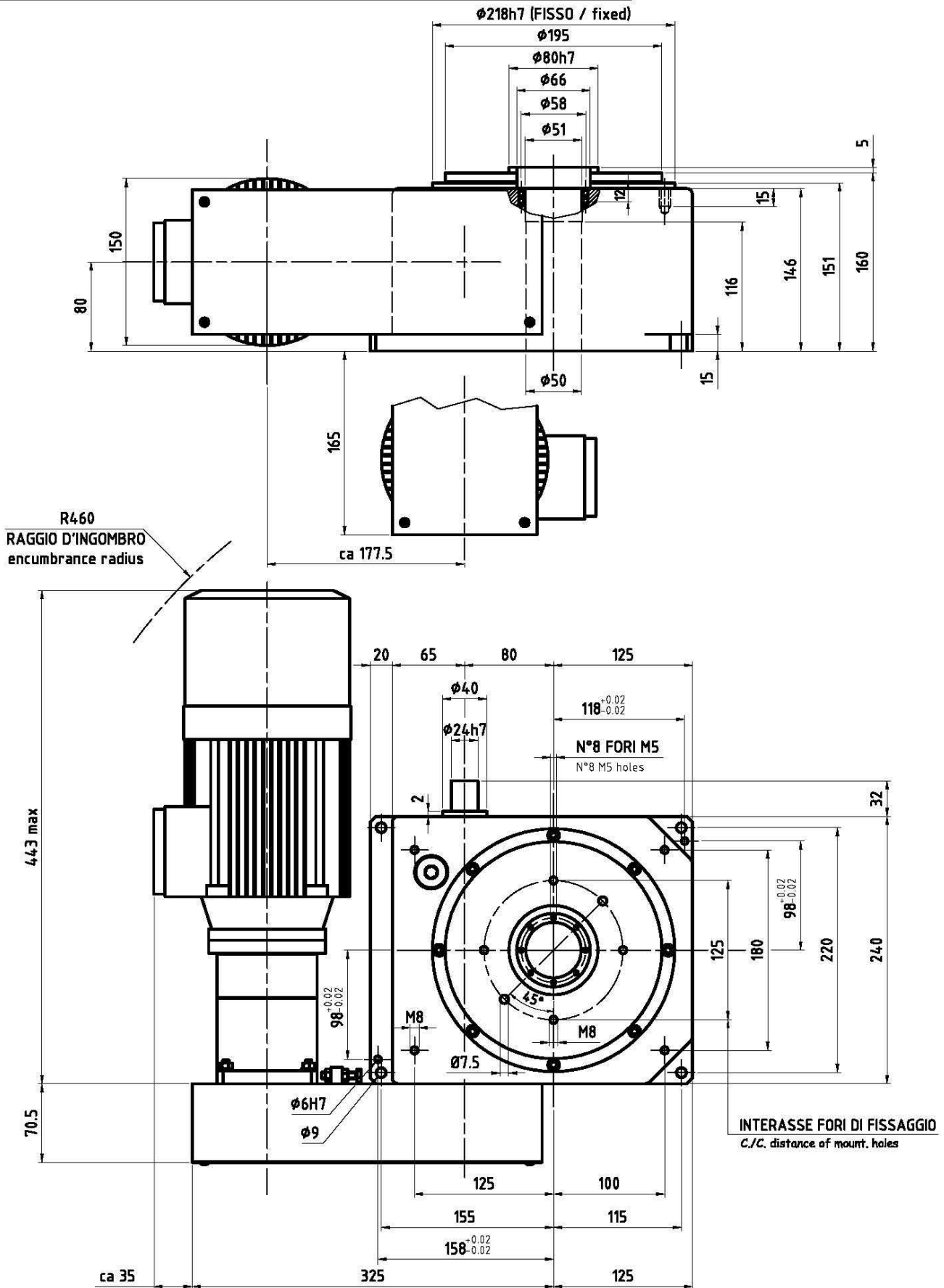
ENCUMBRANCE IN THE DIFFERENT CONFIGURATIONS

Solo tavola <i>Table only</i>	Tavola e trasmissioni <i>Table with trasmissions</i>
Peso / Weight : 36 Kg	Peso / Weight : 40 Kg

TAVOLA ROTANTE ROTARY INDEX TABLE

T 26

PESO / Weight Kg. 55



OUR GERMAN SISTER COMPANY

AUTOROTOR DEUTSCHLAND GMBH

Mühlweg 47
67117 Limburgerhof
Tel. +49/623661003 - Fax +49/623661004
e-mail: info@autorotor.de - http://www.autorotor.de

OUR MAIN REPRESENTATIVES AND DISTRIBUTORS ABROAD

Australia	<p>HAWKER RICHARDSON 1a 62-66 Newton Road Wetherill Park NSW 2164 Ph. 0419365463 - Fax 1800454599 jc@hrltd.com.au www.hrltd.com.au</p>	Malta	<p>RAYAIR AUTOMATION LTD. Corradino Industrial Estate, KW 23 G PAOLA, PLA 08 Malta Ph. +356 21 672497 - Fax +356 21 805181 info@rayair-automation.com www.rayair-automation.com</p>
Belgium	<p>ELEKTROMASS - UNIDRIVE BVBA Schoolstraat, 12 09040 Sint – Amandsberg Ph. +32/92381414 - Fax +32/92381227 sales@elektromass.com www.elektromass.com</p>	Polonia	<p>TB-AUTOMATION A. Legionow, 10 34300 Zywiec - Polonia Tel./Fax 0048/126371377 biuro@tb-automation.com.pl (gen. uffici) http://www.tb-automation.com.pl</p>
Brasil	<p>AXIOS COMERCIO DE MAQUINAS E EQUIPAMENTOS LTDA Rua Taipas, 632-8A, Bairro Barcelona, 09560-200 São Caetano Do Sul, São Paulo Ph. (55) (11) 4221-8003 - Fax (55) (11) 4226-7271 axios@axiosequipamentos.com.br www.axiosequipamentos.com.br</p>	Singapore	<p>SERVO DYNAMICS PTE LTD. 10 Kaki Bukit Road, 1 01-30 Kaki Bukit Ind. Build. 416175 Ph. +65/8440288 - Fax +65/8440070 servodynamics@servo.com.sg www.servo.com.sg</p>
Canada	<p>SEMPRESS CANADA INC. 3580A Wolfedale Road Mississauga, Ontario L5C-2V6 Ph. +1/905-949-2324 - Fax +1/905-949-1944 sempress@sempress.ca www.sempress.ca</p>	Slovak Rep.	<p>BIBUS S.R.O. Priemyselná 4 SK-949 01 Nitra Ph. +421 87 741 25 25 - Fax +421 87 651 67 01 bibus@bibus.sk www.bibus.sk</p>
Czech Rep.	<p>BIBUS S.R.O. Videnska, 125 63927 Brno CS Ph. +420/547125326 - Fax +420/547125310 kelbl@bibus.cz www.bibus.cz</p>	Slovenia	<p>LIPRO D.O.O. Šmarska c. 18 6000 Koper - Capodistria Ph. 00386-56251343 - Fax 00386-56251344 lipro@siol.net</p>
Denmark	<p>BONDY LMT A/S Hassellunden 14 DK 2765 Smorum VAT-no: DK-20678100 Tel. +45 7015 1414 - Fax.: +45 4464 1416 kar@bondy.dk www.bondy.dk</p>	Spain	<p>COTRANSA COMERCIAL DE TRANSMISIONES S.A. P.I. Trobika, C/Landeta, 4 48100 Mungia - Bizkaia Ph. +34/944710102 - Fax +34/944710345 cotransa@cotransa.net www.cotransa.net</p>
France	<p>BERNAY AUTOMATION S.A. 1, Rue de Menneval 27304 Bernay Cedex Ph. +33/232473510 - Fax +33/232430188 info@bernay-automation.com www.bernay-automation.com</p>	Turkey	<p>GIMATIC OTOMASYON TICARET LTD. STI. Perpa Tic. Mrk. A – Blok Kat: 11 No: 1478 Okmeydani / ISTANBUL Ph. +90 (212) 2108391 Fax +90 (212) 2108398 tsjtucker@gimatic.com.tr</p>
Greece	<p>PNEUMATEC IND. AUT. SYSTEMS Nevrokopiu, 18 11855 Athens EL Ph. +30-210-3412101 - Fax +30-210-3413930 pantosit@otenet.gr www.otenet.gr</p>	USA	<p>BURNS CONTROLS 13735 Beta Road Dallas Texas 75244 Ph. +1/972-233-6712 - Fax +1/972-233-8039 burns@burnscontrols.com www.burnscontrols.com</p>
Holland	<p>EVERTS PRODUCT HANDLING Venekoterweg 44, NL 8431 HH Oosterwolde Ph. +31 516 521589 - Fax +31 516 515637 info@everts.nl http://www.everts.nl</p>	USA	<p>EASOM AUTOMATION SYSTEMS INC. 32471 Industrial Dr Madison Heights MI 48071 Ph. +1/248-307-0650 - Fax +1/248-307-0701 sales@easomeng.com www.easomeng.com</p>

